

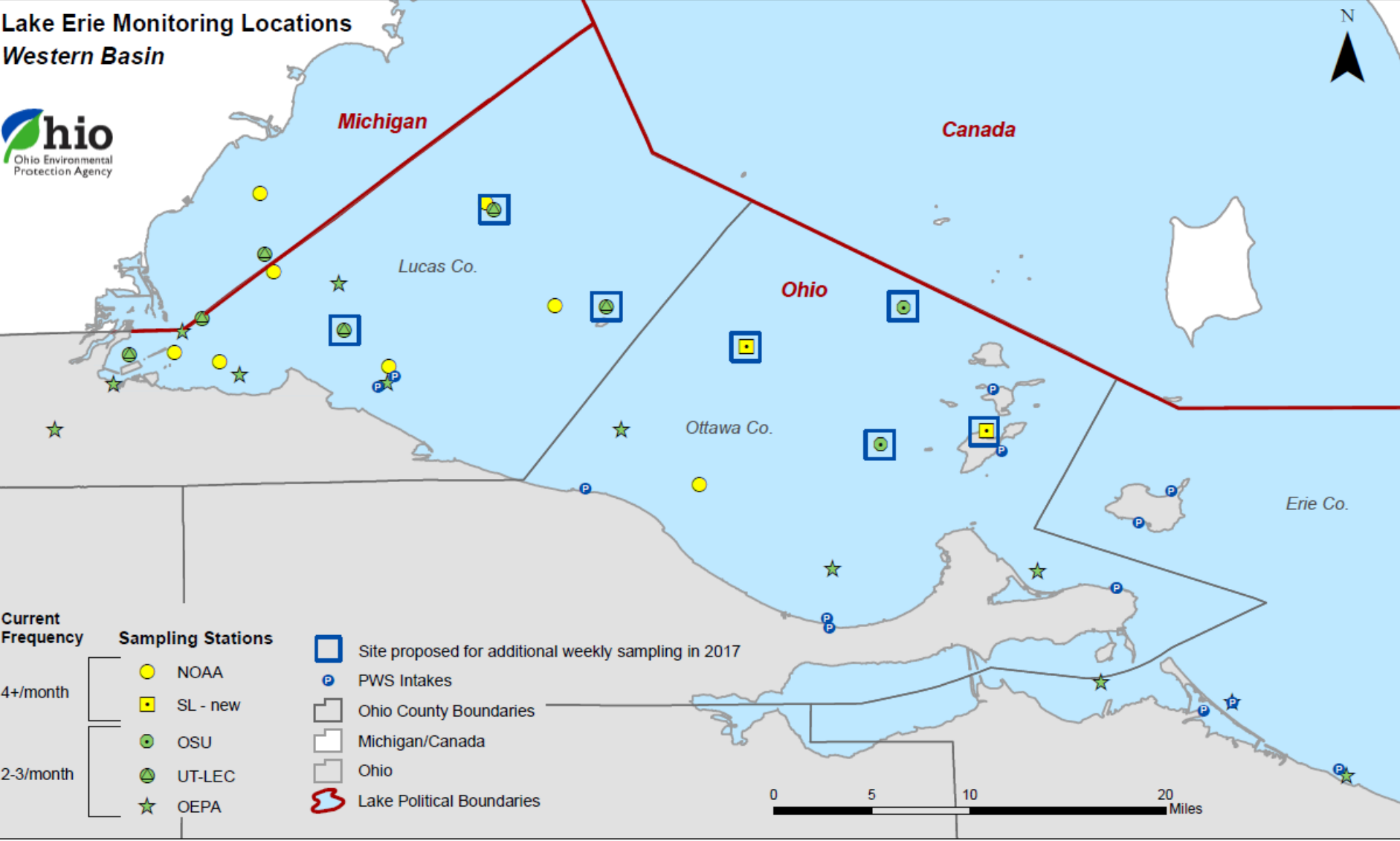
# Lake and Tributary Monitoring



# Lake Erie Monitoring Highlights

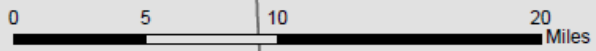
- Continue to sample water quality at fixed shoreline and nearshore stations
- Central Basin Hypoxia -field profiles nearshore to offshore
- Plan is posted at:  
<http://epa.ohio.gov/dsw/lakeerie/index.aspx#125073721-nearshore-monitoring>

# Lake Erie Monitoring Locations Western Basin



Current Frequency	Sampling Stations
4+ / month	● NOAA
	■ SL - new
2-3 / month	● OSU
	● UT-LEC
	★ OEPA

- Site proposed for additional weekly sampling in 2017
- Ⓟ PWS Intakes
- ▭ Ohio County Boundaries
- ▭ Michigan/Canada
- ▭ Ohio
- Ⓡ Lake Political Boundaries



# Monitoring Priorities for Annex 4

Maumee	gage, frequent nutrient monitoring
Portage	gage, frequent nutrient monitoring
Toussaint	no gage or monitoring
Sandusky	gage, frequent nutrient monitoring
Huron	gage, frequent nutrient monitoring starting 2017
Vermilion	gage, monthly nutrient monitoring, surrogates
Cuyahoga	gage, frequent nutrient monitoring
Grand River	gage, frequent nutrient monitoring starting 2017

# Lake Erie Western Basin Drainage in Ohio: USGS Flow Gages and Nutrient Monitoring Stations 2017

